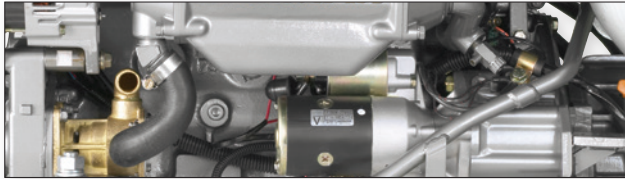


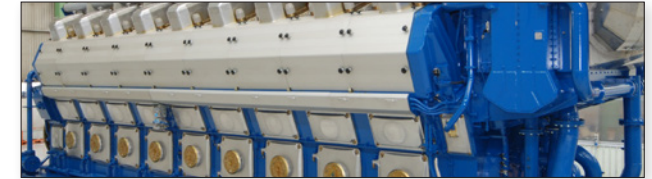
Engine Control and Monitoring Solutions



Gas Engines



2 and 4 Stroke Engines



Dual Fuelled Engines

Liquid Temperature Control Valves

- **Self-contained**
Simple, rugged
Integral temperature sensing elements
Low maintenance
Install in a variety of environments
- **Actuated**
Electrically or pneumatically actuated
Fast response
For tighter temperature control, remote temperature sensing and low pressure drop applications
Easy system integration and positioning
- **Custom Valves**



Pneumatic Panel Components

- For use in hydraulic and pneumatic control systems, offering versatility in a wide variety of operating requirements
- Superior resistance in extreme or highly corrosive environments



Fuel Shutoff and Air Start Valves

- Fuel Shutoff and Air Start Valves designed to instantly shut off fuel supply to a turbine in an emergency or overspeed situation



Sensors and Switches

- Rugged, field-proven temperature, pressure, speed and vibration for control and monitoring systems
- Integral part of hydraulic and pneumatic systems for steam pressure management, over-pressure protection and vibration monitoring



Oil Condition Monitoring

- Metal particle detectors to detect the presence of metal particles in non-conductive lubrication liquids



Commissioning and Service

A manufacturer of quality components for rotating machinery since 1948, AMOT currently has three manufacturing sites and five sales offices positioned strategically around the world to support engine manufacturers and operators globally. Our plants are ISO 9001 accredited and many of our products have industry standard certification.

AMOT recognises the key to your business is keeping your equipment operational and minimising downtime. We continue to work closely alongside the technical teams of our customers to ensure our solutions meet their ever-changing needs.

AMOT has dedicated service centres and partners around the world who install, commission and service our range of products and systems. Our engineers also offer technical support and product training.

Engine Control and Monitoring Solutions - Quick Reference Guide

Liquid Temperature Control Valves

• Internally Sensed, Thermostatic, 3-Way Valves

Model Description

B	sizes: DN40 to DN50 (1½ to 2") threaded DN40 to 200 (1½ to 8") flanged rates: 15 to 400 m³/hr (68 to 1200 US gpm)
C	sizes: DN15 to DN40 (½ to 1½") threaded DN40 (1½") flanged rates: 1.4 to 12 m³/hr (6 to 54 US gpm)
D	sizes: DN200 (8") flanged rates: 363 to 647 m³/hr (1600 to 2850 US gpm)
E	sizes: DN40 (1½") threaded or flanged rates: 8 to 18.3 m³/hr (35 to 79 US gpm)
H	sizes: DN100 to DN150 (4 to 6") flanged rates: 75 to 280 m³/hr (330 to 1232 US gpm)
J	sizes: DN20 (¾") threaded rates: 2 to 8 m³/hr (9 to 35 US gpm)
R	sizes: DN20 to DN80 (¾ to 3") weld rates: 3 to 60 m³/hr (13 to 264 US gpm)

• Externally Sensed 2-Way Valves

Model Description

2470	sizes: DN25 (1") rates: 2 to 8 m³/hr (10 to 35 US gpm)
------	-----------------------------------------------------------

• Actuated 3-Way Valves

Model Description

GE	electric actuation sizes: DN50 to DN450 (2 to 18") rates: 8 to 2870 m³/hr (35 to 12635 US gpm)
GP	pneumatic actuation sizes: DN50 to DN450 (2 to 18") rates: 8 to 3066 m³/hr (35 to 12635 US gpm)
GG	sizes: DN50 to DN200 (2 to 8")* rates: 8 to 720 m³/hr (35 to 3170 US gpm)
8060	RTD temperature sensor – NEMA 4
8064	electronic-pneumatic (I/P) Converter
8071	panel mount PID controller
8072	wall mount PID controller
8073	solid state relay module
SG80	pneumatic controller

Fuel Shutoff and Air Start Valves

• Pilot Operated Valves

Model Description

2180E	diaphragm operated gas valve 2 & 3" in ductile iron, steel
2410	2-way vented valve, ½" in aluminum
4123	air start valve, 1" bronze
4418	2-way high pressure valve 1, 1½, & 2" stainless steel
4420	turbine fuel shutoff valve 2 & 3" stainless steel

Sensors & Switches

• Temperature

Model Description

4140E	2-step temperature switch
4254	dual temperature switch
4270	thermocouple & RTD - 316SS
4271	thermocouple & RTD – spring loaded
8060	RTD temperature sensor – NEMA 4

• Pressure

Model Description

4140F	2-step pressure switch
4255	dual pressure switch

• Vibration

Model Description

4109	vibration switch - pneumatic or electric
5550	vibration switch - hazardous area
ST5484	2-wire vibration transmitter

• Speed

Model Description

11408X	magnetic pickup
1510-01	revguard speed switch
1510-01A	revguard dual speed switch
1510-06	magnetic pickup
4110	overspeed sensing valve
8017	magnetic pickup with terminal box
8210	electronic speed sensing switch

Pneumatic Panel Components

• 3 & 4 Way Valves

Model Description

4057	aluminum 3-way manual or pilot valve
4457	stainless 3-way manual or pilot valve
4058	aluminum 4-way manual or pilot valve
4458	stainless 4-way manual or pilot valve

• Indicators

Model Description

4054	trip indicator
4229	pneumatic indicator
4429	stainless pneumatic indicator

• Indicating Relays

Model Description

2400D	pneumatic indicating relay
2400M	space saver pneumatic indicating relay
4400M	stainless space saver indicating relay

Oil Condition Monitoring

• Metal Particle Detectors

Model Description

MPD2	stainless steel metal particle detector
------	-----------------------------------------

Europe, Middle East and Africa

AMOT - UK
Tel +44 (0) 1284 762222
Email info@amot.com

AMOT Controls GmbH - Germany
Tel +49 (0) 40 8537 1298
Email germany@amot.com

Asia and Australasia

AMOT - China
Tel +86 (0) 21 6279 7700
Email shanghai@amot.com

AMOT - Singapore
Tel +65 6408 6265
Email singapore@amot.com

Americas

AMOT - USA
Tel +1 (281) 940 1800
Email sales@amot.com
customer.service@amot.com

www.amot.com

* DN250 to DN450 (10 to 18") GG available in 2015, flow rates per GE/GP